

UK Office

Everest Biotech Ltd

Cherwell Innovation Centre
77 Heyford Park
Upper Heyford
Oxfordshire
OX25 5HD
UK

Enquiries:

info@everestbiotech.com

Sales:

sales@everestbiotech.com

Tech support:

support@everestbiotech.com

Tel: +44 (0)1869 238326

www.everestbiotech.com

**Research Use Only. Not for
diagnostic or therapeutic use.**

EB08770 - Goat Anti-APOL6 (N Terminus) Antibody

Size: 100µg specific antibody in 200µl



Target Protein

Principal Names: APOL6, apolipoprotein L, 6, APOL-VI, DKFZp667M075, FLJ38562, FLJ90164, MGC57495, apolipoprotein L-VI, apolipoprotein L6

Official Symbol: APOL6

Accession Number(s): NP_085144.1

Human GeneID(s): [80830](#)

Immunogen

Peptide with sequence QRDEDDAPLCE, from the internal region (near N Terminus) of the protein sequence according to NP_085144.1.

Please note the [peptide](#) is available for sale.

Purification and Storage

Purified from goat serum by ammonium sulphate precipitation followed by antigen affinity chromatography using the immunizing peptide.

Supplied at 0.5 mg/ml in Tris saline, 0.02% sodium azide, pH7.3 with 0.5% bovine serum albumin.

Aliquot and store at -20°C. Minimize freezing and thawing.

Applications Tested

Peptide ELISA: antibody detection limit dilution 1:8000.

Western blot: Approx. 38kDa band observed in Human Kidney lysates (calculated MW of 38.1kDa according to NP_085144.1). Recommended concentration: 1-3µg/ml.

IHC: In paraffin embedded Human Liver shows textured cytoplasm staining in hepatocytes. Recommended concentration, 5-10µg/ml.

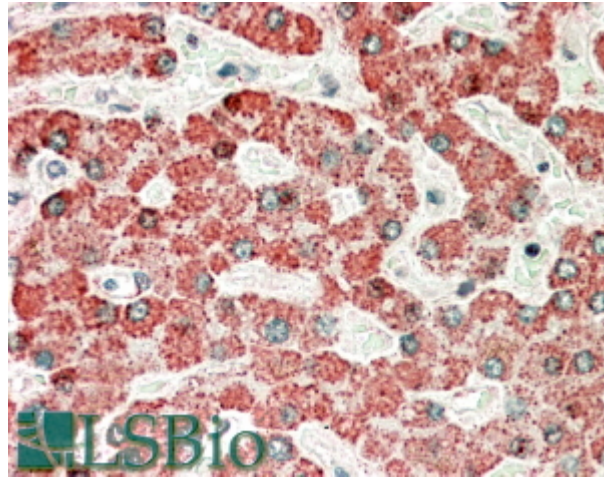
Species Reactivity

Tested: Human

Expected from sequence similarity: Human



EB08770 (1 μ g/ml) staining of Human Kidney lysate (35 μ g protein in RIPA buffer). Primary incubation was 1 hour.
Detected by chemiluminescence.



EB08770 (5 μ g/ml) staining of paraffin embedded Human Liver. Microwaved antigen retrieval with Tris/EDTA buffer pH9, HRP-staining.