

## UK Office

### Everest Biotech Ltd

Cherwell Innovation Centre  
77 Heyford Park  
Upper Heyford  
Oxfordshire  
OX25 5HD  
UK

Enquiries:

[info@everestbiotech.com](mailto:info@everestbiotech.com)

Sales:

[sales@everestbiotech.com](mailto:sales@everestbiotech.com)

Tech support:

[support@everestbiotech.com](mailto:support@everestbiotech.com)

Tel: +44 (0)1869 238326

[www.everestbiotech.com](http://www.everestbiotech.com)

**Research Use Only. Not for  
diagnostic or therapeutic use.**

## EB08916 - Goat Anti-APOL2 Antibody

Size: 100µg specific antibody in 200µl



### Target Protein

**Principal Names:** APOL2, apolipoprotein L, 2, APOL-II, OTTHUMP00000028936, apolipoprotein L-II, apolipoprotein L2

**Official Symbol:** APOL2

**Accession Number(s):** NP\_112092.1; NP\_663612.1

**Human GeneID(s):** [23780](#)

**Important Comments:** Both reported isoforms represent identical proteins (NP\_112092.1; NP\_663612.1).

### Immunogen

Peptide with sequence C-TKIHEMLQPGQD, from the C Terminus of the protein sequence according to NP\_112092.1; NP\_663612.1.

Please note the [peptide](#) is available for sale.

### Purification and Storage

Purified from goat serum by ammonium sulphate precipitation followed by antigen affinity chromatography using the immunizing peptide.

Supplied at 0.5 mg/ml in Tris saline, 0.02% sodium azide, pH7.3 with 0.5% bovine serum albumin.

Aliquot and store at -20°C. Minimize freezing and thawing.

### Applications Tested

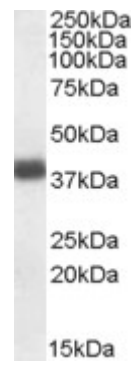
**Peptide ELISA:** antibody detection limit dilution 1:64000.

**Western blot:** Approx 37.1kDa band observed in Human Brain (Frontal Cortex) lysates (calculated MW of 38kDa according to NP\_112092.1; NP\_663612.1). Recommended concentration: 0.03-0.1µg/ml.

### Species Reactivity

**Tested:** Human

**Expected from sequence similarity:** Human



EB008916 (0.03 $\mu$ g/ml) staining of Human Frontal Cortex lysate (35 $\mu$ g protein in RIPA buffer). Primary incubation was 1 hour. Detected by chemiluminescence.