

UK Office

Everest Biotech Ltd

Cherwell Innovation Centre
77 Heyford Park
Upper Heyford
Oxfordshire
OX25 5HD
UK

Enquiries:

info@everestbiotech.com

Sales:

sales@everestbiotech.com

Tech support:

support@everestbiotech.com

Tel: +44 (0)1869 238326

www.everestbiotech.com

**Research Use Only. Not for
diagnostic or therapeutic use.**

EB06655 - Goat Anti-AP-2 gamma Antibody

Size: 100µg specific antibody in 200µl



Target Protein

Principal Names: TFAP2C, ERF1, TFAP2G, hAP-2g, AP2-GAMMA, transcription factor AP-2 gamma (activating enhancer binding protein 2 gamma), estrogen receptor factor 1, transcription factor AP-2 gamma (activating enhancer-binding protein 2 gamma)

Official Symbol: TFAP2C

Accession Number(s): NP_003213.1

Human GeneID(s): [7022](#)

Immunogen

Peptide with sequence C-NKTLEKMEKHRK, from the C Terminus of the protein sequence according to NP_003213.1.

Please note the [peptide](#) is available for sale.

Purification and Storage

Purified from goat serum by ammonium sulphate precipitation followed by antigen affinity chromatography using the immunizing peptide.

Supplied at 0.5 mg/ml in Tris saline, 0.02% sodium azide, pH7.3 with 0.5% bovine serum albumin.

Aliquot and store at -20°C. Minimize freezing and thawing.

Applications Tested

Peptide ELISA: antibody detection limit dilution 1:128000.

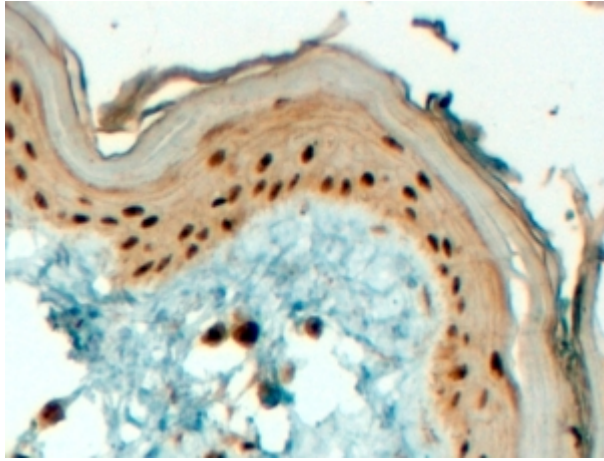
Western blot: WB experiments gave bands at approx 75kDa and 22kDa in Human Placenta and Ovary lysates after 0.1µg/ml antibody staining. Please note that currently we cannot find an explanation in the literature for the bands we observe given the calculated size of 49.2kDa according to NP_003213.1. Both detected bands were successfully blocked by incubation with the immunizing peptide (and BLAST results with the immunizing peptide sequence did not identify any other proteins to explain the additional bands). We would appreciate any feedback from people in the field - have any results been reported with other antibodies/lysates? Have any further splice variants/modified forms been reported?

IHC: In paraffin embedded Human Skin shows nuclear staining of keratinocytes. Recommended concentration, 2-3µg/ml.

Species Reactivity

Tested: Human

Expected from sequence similarity: Human, Rat, Mouse, Dog, Pig, Cow



EB06655 (4µg/ml) staining of paraffin embedded Human Skin. Steamed antigen retrieval with Tris/EDTA buffer pH 9, HRP-staining.