

UK Office

Everest Biotech Ltd

Cherwell Innovation Centre
77 Heyford Park
Upper Heyford
Oxfordshire
OX25 5HD
UK

Enquiries:

info@everestbiotech.com

Sales:

sales@everestbiotech.com

Tech support:

support@everestbiotech.com

Tel: +44 (0)1869 238326

www.everestbiotech.com

**Research Use Only. Not for
diagnostic or therapeutic use.**

EB07300 - Goat Anti-ANILLIN / Scraps (internal) Antibody

Size: 100µg specific antibody in 200µl



Target Protein

Principal Names: ANILLIN, Scraps, ANLN, anillin, actin binding protein (scraps homolog, Drosophila), DKFZp779A055, anillin (Drosophila Scraps homolog), actin binding protein

Official Symbol: ANLN

Accession Number(s): NP_061155.2

Human GeneID(s): [54443](#)

Non-Human GeneID(s): 68743 (mouse), 307056 (rat)

Immunogen

Peptide with sequence C-TYPDDEKRKNP, from the internal region of the protein sequence according to NP_061155.2.

Please note the [peptide](#) is available for sale.

Purification and Storage

Purified from goat serum by ammonium sulphate precipitation followed by antigen affinity chromatography using the immunizing peptide.

Supplied at 0.5 mg/ml in Tris saline, 0.02% sodium azide, pH7.3 with 0.5% bovine serum albumin.

Aliquot and store at -20°C. Minimize freezing and thawing.

Applications Tested

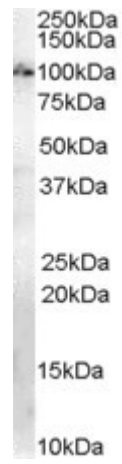
Peptide ELISA: antibody detection limit dilution 1:16000.

Western blot: Approx 100kDa band observed in Human and Mouse Brain lysates (calculated MW of 124kDa according to NP_061155.2). Recommended concentration: 1-3µg/ml.

Species Reactivity

Tested: Human, Mouse

Expected from sequence similarity: Human, Mouse, Rat, Dog



EB07300 (1µg/ml) staining of Mouse Brain lysate (35µg protein in RIPA buffer). Primary incubation was 1 hour.
Detected by chemiluminescence.