

UK Office

Everest Biotech Ltd

Cherwell Innovation Centre
77 Heyford Park
Upper Heyford
Oxfordshire
OX25 5HD
UK

Enquiries:

info@everestbiotech.com

Sales:

sales@everestbiotech.com

Tech support:

support@everestbiotech.com

Tel: +44 (0)1869 238326

www.everestbiotech.com

**Research Use Only. Not for
diagnostic or therapeutic use.**

EB10437-B - Goat Anti-ALDH6A1 (aa487-496), Biotinylated Antibody

Size: 100µg specific antibody in 200µl



Target Protein

Principal Names: ALDH6A1, aldehyde dehydrogenase 6 family member A1, MMSADHA, MMSDH, aldehyde dehydrogenase 6 family, member A1, malonate-semialdehyde dehydrogenase, mitochondrial acylating methylmalonate-semialdehyde dehydrogenase, testicular tissue protein Li 122

Official Symbol: ALDH6A1

Accession Number(s): NP_005580.1; NP_001265522.1; NP_001265523.1

Human GeneID(s): [4329](#)

Non-Human GeneID(s): 104776 (mouse), 81708 (rat)

Important Comments: This antibody is expected to recognize all three reported isoform (NP_005580.1; NP_001265522.1; NP_001265523.1).

Immunogen

Peptide with sequence C-SRSSFRGDTN., from the internal region of the protein sequence according to NP_005580.1; NP_001265522.1; NP_001265523.1.

Please note the [peptide](#) is available for sale.

Purification and Storage

Purified from goat serum by ammonium sulphate precipitation followed by antigen affinity chromatography using the immunizing peptide.

Supplied at 0.5 mg/ml in Tris saline, 0.02% sodium azide, pH7.3 with 0.5% bovine serum albumin.

Aliquot and store at -20°C. Minimize freezing and thawing.

Applications Tested

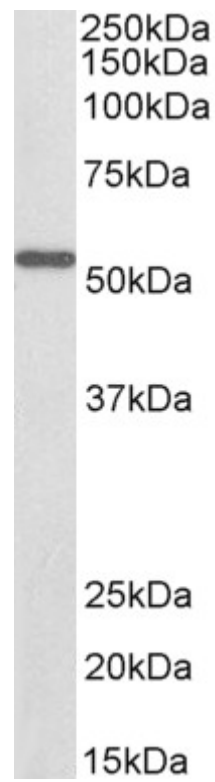
Peptide ELISA: antibody detection limit dilution 1:32000.

Western blot: Approx 55kDa band observed in Mouse Kidney lysates (calculated MW of 57.9kDa according to Mouse NP_598803.1). See non-biotinylated parental product's datasheet for further QC data. Recommended concentration: 0.1-0.3µg/ml.

Species Reactivity

Tested: Human, Mouse, Rat

Expected from sequence similarity: Human, Mouse, Rat, Dog, Cow, Pig



Biotinylated EB10437 (0.1µg/ml) staining of Mouse Kidney lysate (35µg protein in RIPA buffer), exactly mirroring its parental non-biotinylated product. Primary incubation was 1 hour. Detected by chemiluminescence, using streptavidin-HRP and using NAP blocker as a substitute for skimmed milk.