

## UK Office

### Everest Biotech Ltd

Cherwell Innovation Centre  
77 Heyford Park  
Upper Heyford  
Oxfordshire  
OX25 5HD  
UK

Enquiries:

[info@everestbiotech.com](mailto:info@everestbiotech.com)

Sales:

[sales@everestbiotech.com](mailto:sales@everestbiotech.com)

Tech support:

[support@everestbiotech.com](mailto:support@everestbiotech.com)

Tel: +44 (0)1869 238326

[www.everestbiotech.com](http://www.everestbiotech.com)

**Research Use Only. Not for  
diagnostic or therapeutic use.**

## EB10437 - Goat Anti-ALDH6A1 (aa487-496) Antibody

Size: 100µg specific antibody in 200µl



### Target Protein

**Principal Names:** aldehyde dehydrogenase 6 family, member A1, aldehyde dehydrogenase 6A1, MGC40271, mitochondrial acylating methylmalonate-semialdehyde dehydrogenase, MMSADHA, MMSDH, ALDH6A1

**Official Symbol:** ALDH6A1

**Accession Number(s):** NP\_005580.1; NP\_001265522.1; NP\_001265523.1

**Human GeneID(s):** [4329](#)

**Non-Human GeneID(s):** 104776 (mouse), 81708 (rat)

**Important Comments:** This antibody is expected to recognize all three reported isoform (NP\_005580.1; NP\_001265522.1; NP\_001265523.1).

### Immunogen

Peptide with sequence C-SRSSFRGDTN, from the internal region of the protein sequence according to NP\_005580.1; NP\_001265522.1; NP\_001265523.1.

Please note the [peptide](#) is available for sale.

### Purification and Storage

Purified from goat serum by ammonium sulphate precipitation followed by antigen affinity chromatography using the immunizing peptide.

Supplied at 0.5 mg/ml in Tris saline, 0.02% sodium azide, pH7.3 with 0.5% bovine serum albumin.

Aliquot and store at -20°C. Minimize freezing and thawing.

### Applications Tested

**Peptide ELISA:** antibody detection limit dilution 1:32000.

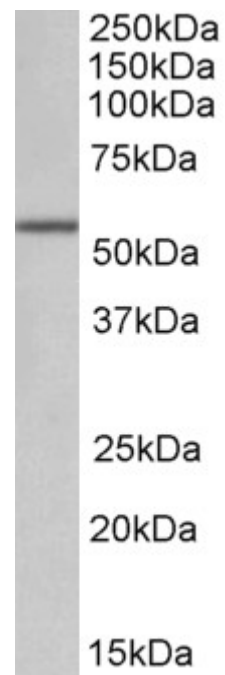
**Western blot:** Approx 55kDa band observed in Human, Mouse and Rat Kidney lysates (calculated MW of 57.8kDa according to NP\_005580.1). Recommended concentration: 0.1-0.3µg/ml.

**IHC:** In paraffin embedded Human Liver shows textured staining of the cytoplasm consistent with mitochondria. Recommended concentration, 5-10µg/ml.

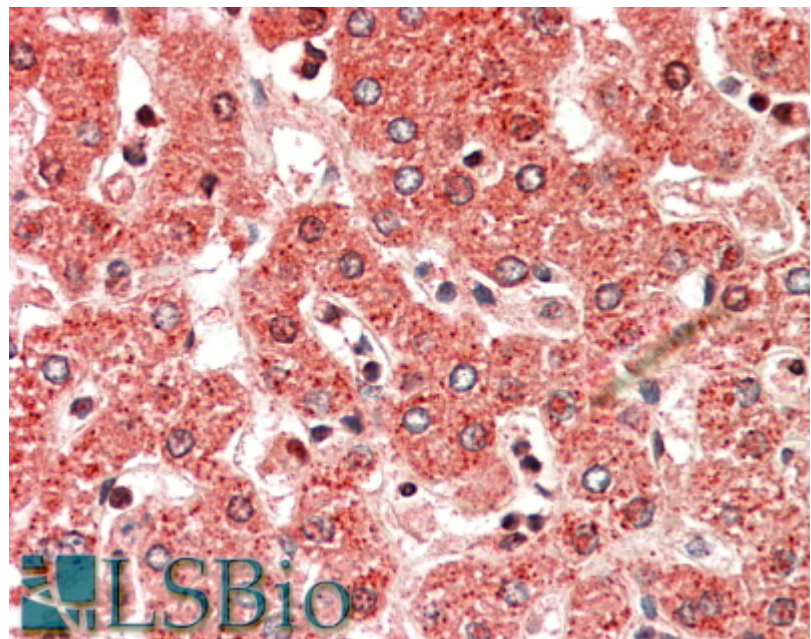
### Species Reactivity

**Tested:** Human, Mouse, Rat

**Expected from sequence similarity:** Human, Mouse, Rat, Dog, Cow, Pig



EB10437 (0.1 $\mu$ g/ml) staining of Mouse Kidney lysate (35 $\mu$ g protein in RIPA buffer). Primary incubation was 1 hour. Detected by chemiluminescence.



EB10437 (5 $\mu$ g/ml) staining of paraffin embedded Human Liver. Steamed antigen retrieval with citrate buffer pH 6, AP-staining.