

## UK Office

### Everest Biotech Ltd

Cherwell Innovation Centre  
77 Heyford Park  
Upper Heyford  
Oxfordshire  
OX25 5HD  
UK

Enquiries:

[info@everestbiotech.com](mailto:info@everestbiotech.com)

Sales:

[sales@everestbiotech.com](mailto:sales@everestbiotech.com)

Tech support:

[support@everestbiotech.com](mailto:support@everestbiotech.com)

Tel: +44 (0)1869 238326

[www.everestbiotech.com](http://www.everestbiotech.com)

**Research Use Only. Not for  
diagnostic or therapeutic use.**

## EB10122 - Goat Anti-ALDH1B1 Antibody

Size: 100µg specific antibody in 200µl



### Target Protein

**Principal Names:** acetaldehyde dehydrogenase 5, aldehyde dehydrogenase 1 family, member B1, aldehyde dehydrogenase 1B1, aldehyde dehydrogenase 5, ALDH class 2, ALDH5, ALDHX, MGC2230, mitochondrial aldehyde dehydrogenase X, ALDH1B1

**Official Symbol:** ALDH1B1

**Accession Number(s):** NP\_000683.3

**Human GeneID(s):** [219](#)

### Immunogen

Peptide with sequence C-DKEQFERVLGYIQ, from the internal region of the protein sequence according to NP\_000683.3.

Please note the [peptide](#) is available for sale.

### Purification and Storage

Purified from goat serum by ammonium sulphate precipitation followed by antigen affinity chromatography using the immunizing peptide.

Supplied at 0.5 mg/ml in Tris saline, 0.02% sodium azide, pH7.3 with 0.5% bovine serum albumin.

Aliquot and store at -20°C. Minimize freezing and thawing.

### Applications Tested

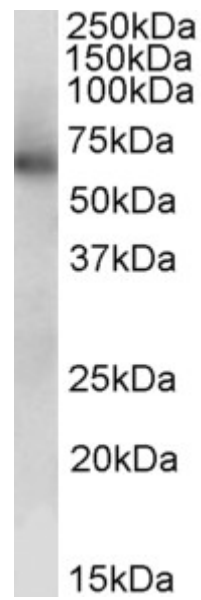
**Peptide ELISA:** antibody detection limit dilution 1:4000.

**Western blot:** Approx 60kDa band observed in Human Liver lysates (calculated MW of 57.2kDa according to NP\_000683.3). Recommended concentration: 0.3-1µg/ml.

### Species Reactivity

**Tested:** Human

**Expected from sequence similarity:** Human, Mouse, Rat, Pig



EB10122 (0.3µg/ml) staining of Human Liver lysate (35µg protein in RIPA buffer). Primary incubation was 1 hour.  
Detected by chemiluminescence.