

UK Office

Everest Biotech Ltd

Cherwell Innovation Centre
77 Heyford Park
Upper Heyford
Oxfordshire
OX25 5HD
UK

Enquiries:

info@everestbiotech.com

Sales:

sales@everestbiotech.com

Tech support:

support@everestbiotech.com

Tel: +44 (0)1869 238326

www.everestbiotech.com

**Research Use Only. Not for
diagnostic or therapeutic use.**

EB05538 - Goat Anti-Aldehyde Reductase Antibody

Size: 100µg specific antibody in 200µl



Target Protein

Principal Names: aldehyde reductase, AKR1A1, aldo-keto reductase family 1, member A1 (aldehyde reductase), ALDR1, ALR, MGC12529, MGC1380, alcohol dehydrogenase, aldo-keto reductase family 1, member A1, DD3, OTTHUMP00000009240, dihydrodiol dehydrogenase 3

Official Symbol: AKR1A1

Accession Number(s): NP_006057.1; NP_697021.1

Human GeneID(s): [10327](#)

Non-Human GeneID(s): 58810 (mouse), 78959 (rat)

Important Comments: Both reported variants (NP_006057.1 and NP_697021.1) represent identical protein

Immunogen

Peptide with sequence C-DAGHPLYPFNDPY, from the C Terminus of the protein sequence according to NP_006057.1; NP_697021.1.

Please note the [peptide](#) is available for sale.

Purification and Storage

Purified from goat serum by ammonium sulphate precipitation followed by antigen affinity chromatography using the immunizing peptide.

Supplied at 0.5 mg/ml in Tris saline, 0.02% sodium azide, pH7.3 with 0.5% bovine serum albumin.

Aliquot and store at -20°C. Minimize freezing and thawing.

Applications Tested

Peptide ELISA: antibody detection limit dilution 1:16000.

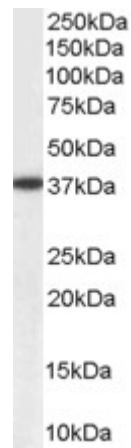
Western blot: Approx 37kDa band observed in Human Liver lysates (calculated MW of 36.6kDa according to NP_006057.1 and NP_697021.1). Recommended concentration: 0.1-0.3µg/ml. Primary incubation 1 hour at room temperature.

IHC: Paraffin embedded Human Kidney. Recommended concentration: 5µg/ml.

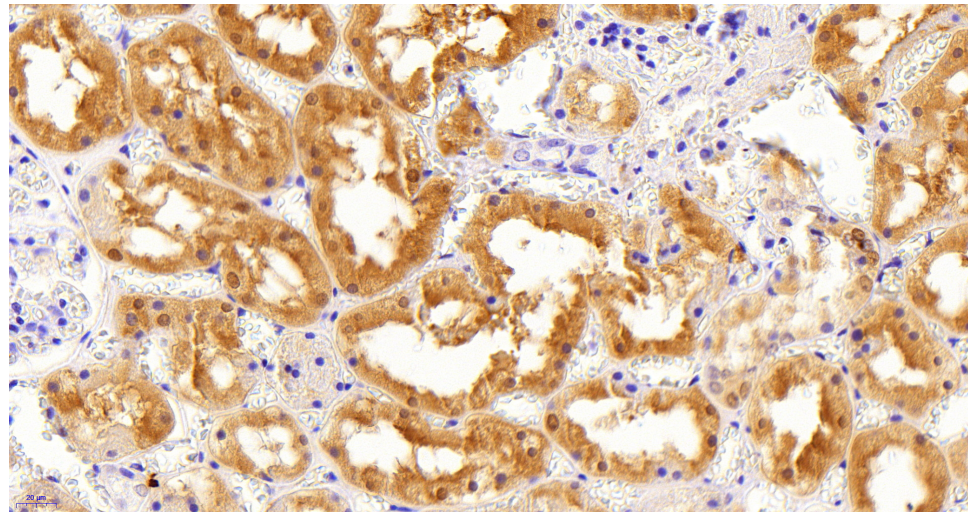
Species Reactivity

Tested: Human

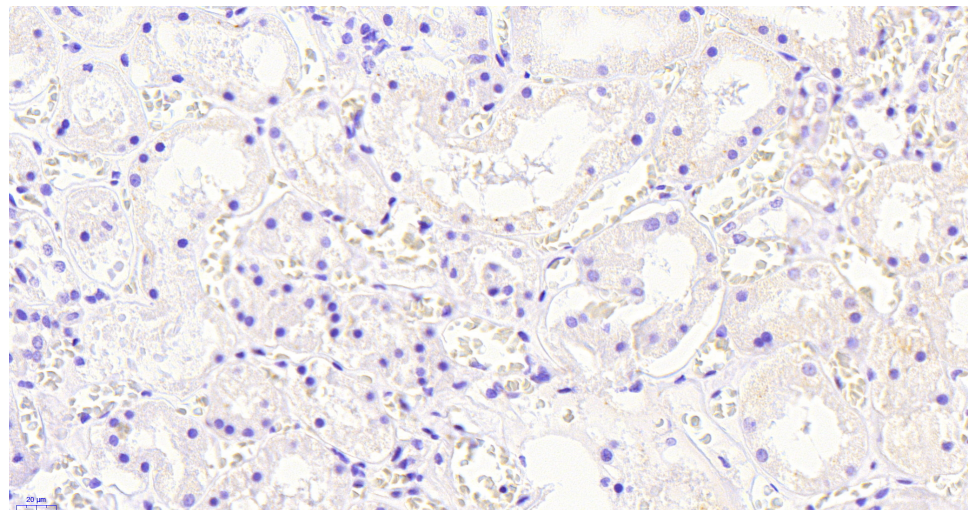
Expected from sequence similarity: Human, Mouse, Rat, Dog, Pig, Cow



EB05538 (0.1µg/ml) staining of Human Liver lysate (35µg protein in RIPA buffer). Primary incubation was 1 hour.
Detected by chemiluminescence.



EB05538 (5µg/ml) staining of paraffin embedded Human Kidney. Heat induced antigen retrieval with citrate buffer pH 6, HRP-staining.



EB05538 Negative Control showing staining of paraffin embedded Human Kidney, with no primary antibody.