

UK Office

Everest Biotech Ltd

Cherwell Innovation Centre
77 Heyford Park
Upper Heyford
Oxfordshire
OX25 5HD
UK

Enquiries:

info@everestbiotech.com

Sales:

sales@everestbiotech.com

Tech support:

support@everestbiotech.com

Tel: +44 (0)1869 238326

www.everestbiotech.com

**Research Use Only. Not for
diagnostic or therapeutic use.**

EB06326 - Goat Anti-AKAP8 / AKAP95 Antibody

Size: 100µg specific antibody in 200µl



Target Protein

Principal Names: AKAP8, AKAP95, DKFZp586B1222, A kinase (PRKA) anchor protein 8, A kinase anchor protein 95, A-kinase anchor protein 8, A-kinase anchor protein, 95kDa

Official Symbol: AKAP8

Accession Number(s): NP_005849.1

Human GeneID(s): [10270](#)

Non-Human GeneID(s): 56399 (mouse), 116633 (rat)

Immunogen

Peptide with sequence DQGYGGYGAWWSAG-C, from the N Terminus of the protein sequence according to NP_005849.1.

Please note the [peptide](#) is available for sale.

Purification and Storage

Purified from goat serum by ammonium sulphate precipitation followed by antigen affinity chromatography using the immunizing peptide.

Supplied at 0.5 mg/ml in Tris saline, 0.02% sodium azide, pH7.3 with 0.5% bovine serum albumin.

Aliquot and store at -20°C. Minimize freezing and thawing.

Applications Tested

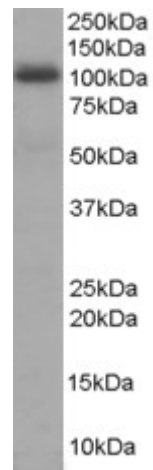
Peptide ELISA: antibody detection limit dilution 1:32000.

Western blot: Experiments gave a band at approx 100kDa in Human Liver lysate after 1µg/ml antibody staining. This band corresponds to the 95kDa band reported in literature (PMID: 10601332). This protein has a calculated MW of 76.1kDa according to NP_005849. Recommended concentration: 1-3µg/ml.

Species Reactivity

Tested: Human

Expected from sequence similarity: Human, Mouse, Rat, Cow



EB06326 staining (1µg/ml) of Human Liver lysate (RIPA buffer, 35µg total protein per lane). Primary incubated for 1 hour. Detected by western blot using chemiluminescence.