

## UK Office

### Everest Biotech Ltd

Cherwell Innovation Centre  
77 Heyford Park  
Upper Heyford  
Oxfordshire  
OX25 5HD  
UK

Enquiries:

[info@everestbiotech.com](mailto:info@everestbiotech.com)

Sales:

[sales@everestbiotech.com](mailto:sales@everestbiotech.com)

Tech support:

[support@everestbiotech.com](mailto:support@everestbiotech.com)

Tel: +44 (0)1869 238326

[www.everestbiotech.com](http://www.everestbiotech.com)

**Research Use Only. Not for  
diagnostic or therapeutic use.**

## EB12621 - Goat Anti-AIFM1 (aa183-195) Antibody

Size: 100µg specific antibody in 200µl



### Target Protein

**Principal Names:** AIFM1, apoptosis-inducing factor, mitochondrion-associated, 1, AIF, CMTX4, COWCK, COXPD6, PDCD8, apoptosis-inducing factor 1, mitochondrial, programmed cell death 8 (apoptosis-inducing factor), striatal apoptosis-inducing factor

**Official Symbol:** AIFM1

**Accession Number(s):** NP\_004199.1; NP\_665811.1; NP\_001124319.1

**Human GeneID(s):** [9131](#)

**Important Comments:** This antibody is expected to recognize isoform 1 (NP\_004199.1), isoform 2 (NP\_665811.1) and isoform 5 (NP\_001124319.1).

### Immunogen

Peptide with sequence C-DDPNVTKTLRFKQ, from the internal region of the protein sequence according to NP\_004199.1; NP\_665811.1; NP\_001124319.1.

Please note the [peptide](#) is available for sale.

### Purification and Storage

Purified from goat serum by ammonium sulphate precipitation followed by antigen affinity chromatography using the immunizing peptide.

Supplied at 0.5 mg/ml in Tris saline, 0.02% sodium azide, pH7.3 with 0.5% bovine serum albumin.

Aliquot and store at -20°C. Minimize freezing and thawing.

### Applications Tested

**Peptide ELISA:** antibody detection limit dilution 1:128000.

**Western blot:** Approx 70kDa band observed in lysates of cell line Jurkat (calculated MW of 66.9kDa according to NP\_004199.1). Recommended concentration: 0.1-0.3µg/ml.

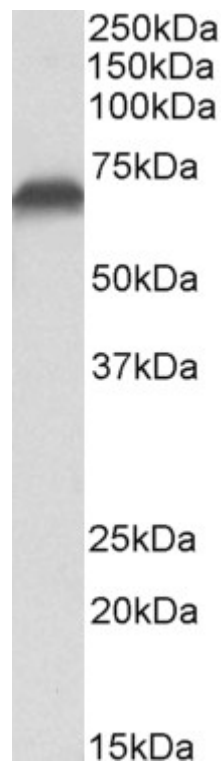
Primary incubation 1 hour at room temperature.

**Immunofluorescence:** Strong expression of the protein seen in the Mitochondria of HeLa and NIH3T3 cells. Recommended concentration: 5-10µg/ml.

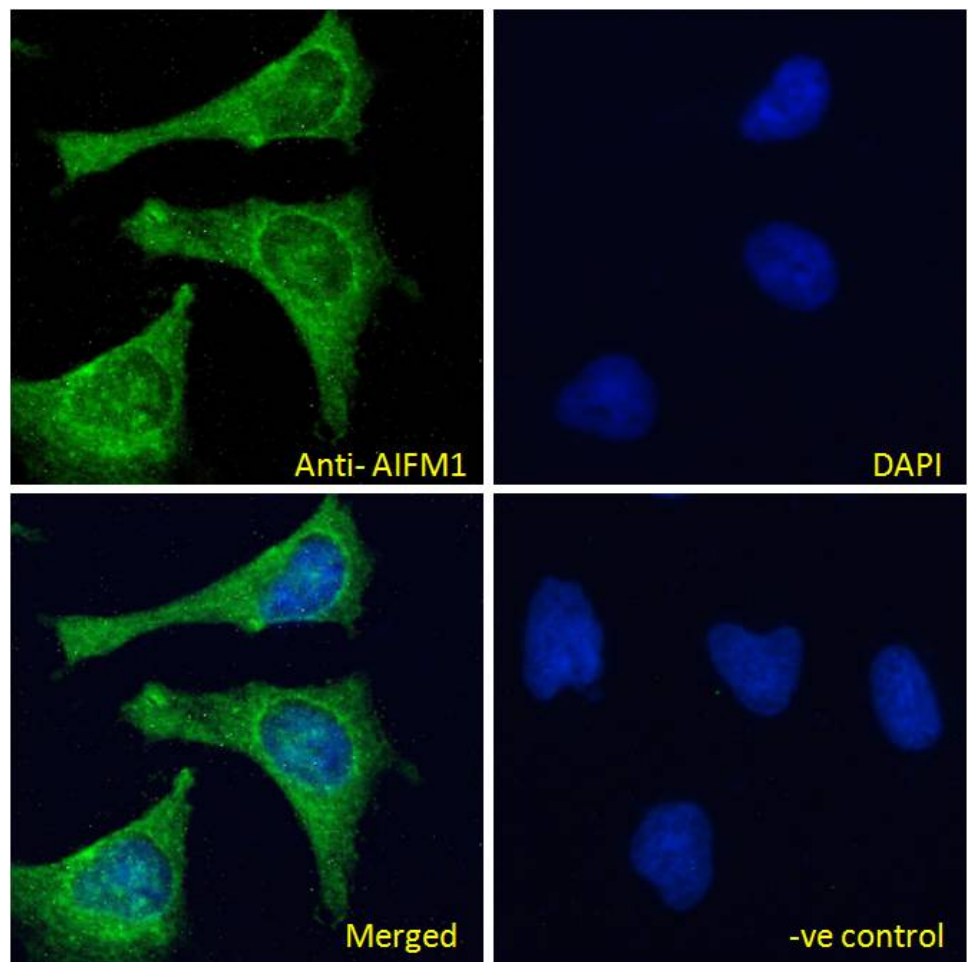
### Species Reactivity

**Tested:** Human, Mouse

**Expected from sequence similarity:** Human, Cow

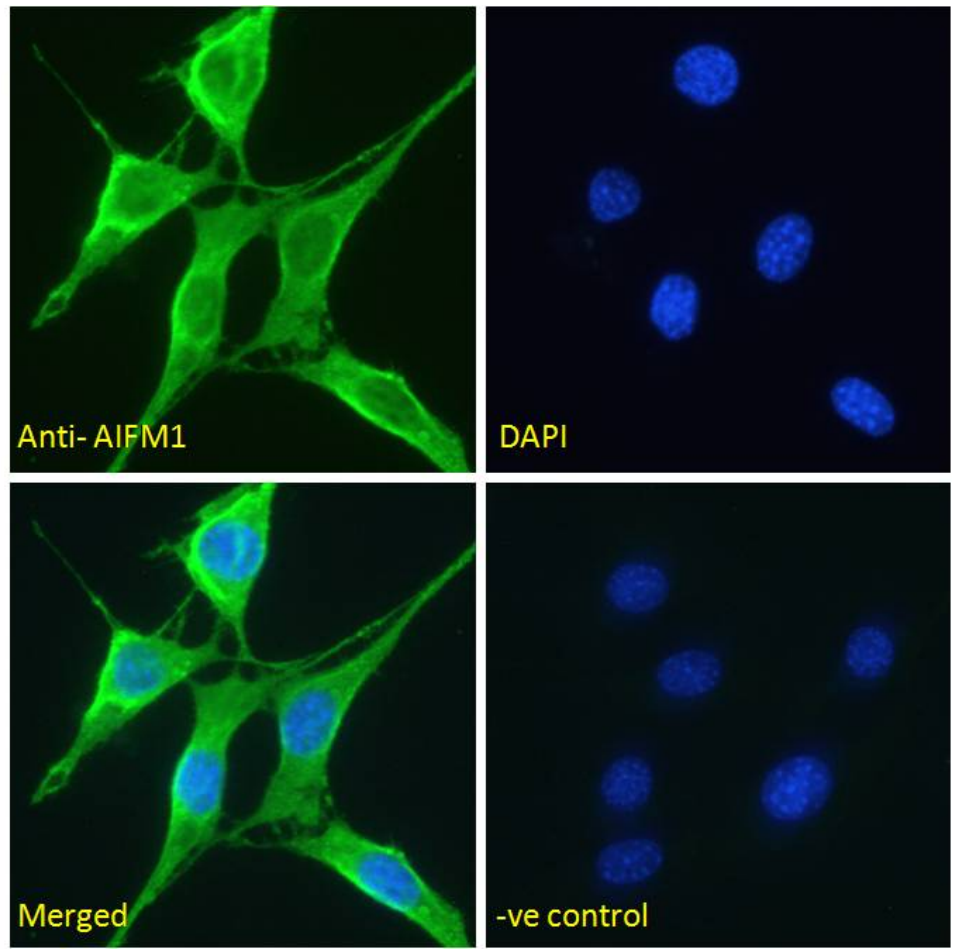


EB12621 (0.1 $\mu$ g/ml) staining of Jurkat lysate (35 $\mu$ g protein in RIPA buffer). Detected by chemiluminescence.



EB12621-P1 Immunofluorescence analysis of paraformaldehyde fixed HeLa cells, permeabilized with 0.15% Triton. Primary incubation 1hr (10 $\mu$ g/ml) followed by Alexa Fluor 488 secondary antibody (4 $\mu$ g/ml), showing Mitochondrial staining. The nuclear stain is DAPI (blue). Negative control: Unimmunized goat IgG (10 $\mu$ g/ml)

followed by Alexa Fluor 488 secondary antibody (4ug/ml).



EB12621 Immunofluorescence analysis of paraformaldehyde fixed NIH3T3 cells, permeabilized with 0.15% Triton. Primary incubation 1hr (5ug/ml) followed by Alexa Fluor 488 secondary antibody (2ug/ml), showing Mitochondrial staining. The nuclear stain is DAPI (blue). Negative control: Unimmunized goat IgG (5ug/ml) followed by Alexa Fluor 488 secondary antibody (2ug/ml).