

## UK Office

### Everest Biotech Ltd

Cherwell Innovation Centre  
77 Heyford Park  
Upper Heyford  
Oxfordshire  
OX25 5HD  
UK

Enquiries:

[info@everestbiotech.com](mailto:info@everestbiotech.com)

Sales:

[sales@everestbiotech.com](mailto:sales@everestbiotech.com)

Tech support:

[support@everestbiotech.com](mailto:support@everestbiotech.com)

Tel: +44 (0)1869 238326

[www.everestbiotech.com](http://www.everestbiotech.com)

**Research Use Only. Not for  
diagnostic or therapeutic use.**

## EB05393-B - Goat Anti-AIBZIP / CREB3L4, Biotinylated Antibody

Size: 100µg specific antibody in 200µl



### Target Protein

**Principal Names:** CREB3L4, cAMP responsive element binding protein 3-like 4, AIBZIP, ATCE1, CREB3, CREB4, JAL, hJAL, CREB-4, androgen-induced basic leucine zipper protein, attaching to CRE-like 1, cAMP responsive element binding protein 1, cAMP-responsive element-binding protein 3-like protein 4, cAMP-responsive element-binding protein 4, cyclic AMP-responsive element-binding protein 4, tisp40, transcript induced in spermiogenesis protein 40

**Official Symbol:** CREB3L4

**Accession Number(s):** NP\_570968.1; NP\_001242909.1

**Human GeneID(s):** [148327](#)

**Important Comments:** This antibody is expected to recognize both reported isoforms (NP\_570968.1; NP\_001242909.1). Reported variants represent identical protein: NP\_001242908.1, NP\_570968.1, NP\_001242907.1 Reported variants represent identical protein: NP\_001242909.1, NP\_001242910.1

### Immunogen

Peptide with sequence CPSGRIRSVLHADEM., from the C Terminus of the protein sequence according to NP\_570968.1; NP\_001242909.1.

Please note the [peptide](#) is available for sale.

### Purification and Storage

Purified from goat serum by ammonium sulphate precipitation followed by antigen affinity chromatography using the immunizing peptide.

Supplied at 0.5 mg/ml in Tris saline, 0.02% sodium azide, pH7.3 with 0.5% bovine serum albumin.

Aliquot and store at -20°C. Minimize freezing and thawing.

### Applications Tested

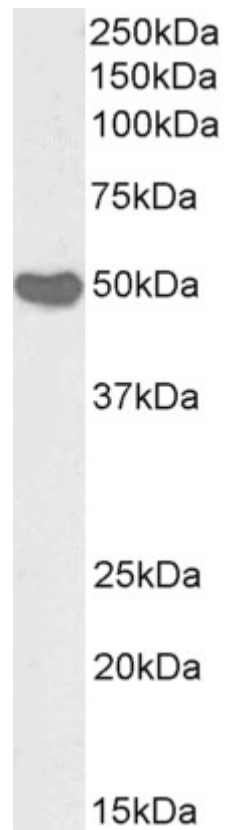
**Peptide ELISA:** antibody detection limit dilution 1:32000.

**Western blot:** Approx 50kDa band observed in Human Placenta lysates (calculated MW of 43.4kDa according to NP\_570968.1). See non-biotinylated parental product's datasheet for further QC data. Recommended concentration: 1-3µg/ml.

### Species Reactivity

**Tested:** Human

**Expected from sequence similarity:** Human



Biotinylated EB05393 (1µg/ml) staining of Human Placenta lysate (35µg protein in RIPA buffer), exactly mirroring its parental non-biotinylated product. Primary incubation was 1 hour. Detected by chemiluminescence, using streptavidin-HRP and using NAP blocker as a substitute for skimmed milk.