

UK Office

Everest Biotech Ltd

Cherwell Innovation Centre
77 Heyford Park
Upper Heyford
Oxfordshire
OX25 5HD
UK

Enquiries:

info@everestbiotech.com

Sales:

sales@everestbiotech.com

Tech support:

support@everestbiotech.com

Tel: +44 (0)1869 238326

www.everestbiotech.com

**Research Use Only. Not for
diagnostic or therapeutic use.**

EB06755 - Goat Anti-ADAM33 Antibody

Size: 100µg specific antibody in 200µl



Target Protein

Principal Names: ADAM33, a disintegrin and metalloproteinase domain 33, HGNC:15478, DJ964F7.1, DKFZp434K0521, FLJ35308, FLJ36751, MGC71889, a disintegrin and metalloprotease 33, disintegrin and repolysin metalloproteinase family protein, metalloprotease disintegrin, ADAM metalloproteinase domain 33, RP5-964F7.2, C20orf153, MGC149823

Official Symbol: ADAM33

Accession Number(s): NP_079496.1

Human GeneID(s): [80332](#)

Important Comments: This antibody is expected to recognise isoform alpha (NP_079496.1) and not isoform beta (NP_694882.1).

Immunogen

Peptide with sequence CQSRRRCRKNAFQEL, from the internal region of the protein sequence according to NP_079496.1.

Please note the [peptide](#) is available for sale.

Purification and Storage

Purified from goat serum by ammonium sulphate precipitation followed by antigen affinity chromatography using the immunizing peptide.

Supplied at 0.5 mg/ml in Tris saline, 0.02% sodium azide, pH7.3 with 0.5% bovine serum albumin.

Aliquot and store at -20°C. Minimize freezing and thawing.

Applications Tested

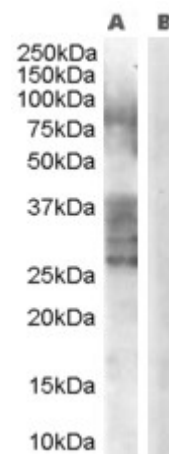
Peptide ELISA: antibody detection limit dilution 1:64000.

Western blot: Experiments gave bands at approx 80-90kDa and strong ladder from 26 to 38kDa in Human Prostate lysates after 0.3µg/ml antibody staining. The observation of multiple bands and the 38 kDa band correspond to earlier findings in literature with different antibodies (Powell et al, Am J Respir Cell Mol Biol. 2004 Jul;31(1):13-21; PMID: 14742294). This protein has a calculated MW of 87.7kDa according to NP_079496.1. Recommended concentration: 0.1-0.3µg/ml.

Species Reactivity

Tested: Human

Expected from sequence similarity: Human



EB06755 (0.3 μ g/ml) staining of Human Prostate lysate (35 μ g protein in RIPA buffer) with (B) and without (A) blocking with the immunising peptide. Primary incubation was 1 hour. Detected by chemiluminescence.