

## UK Office

### Everest Biotech Ltd

Cherwell Innovation Centre  
77 Heyford Park  
Upper Heyford  
Oxfordshire  
OX25 5HD  
UK

Enquiries:

[info@everestbiotech.com](mailto:info@everestbiotech.com)

Sales:

[sales@everestbiotech.com](mailto:sales@everestbiotech.com)

Tech support:

[support@everestbiotech.com](mailto:support@everestbiotech.com)

Tel: +44 (0)1869 238326

[www.everestbiotech.com](http://www.everestbiotech.com)

**Research Use Only. Not for  
diagnostic or therapeutic use.**

## EB07250 - Goat Anti-ACSL5 Antibody

Size: 100µg specific antibody in 200µl



### Target Protein

**Principal Names:** ACSL5, acyl-CoA synthetase long-chain family member 5, HGNC:16526, ACS2, ACS5, FACL5, fatty-acid-Coenzyme A ligase, long-chain 5, long-chain acyl-CoA synthetase 5, long-chain fatty acid coenzyme A ligase 5

**Official Symbol:** ACSL5

**Accession Number(s):** NP\_057318.2; NP\_976313.1; NP\_976314.1

**Human GeneID(s):** [51703](#)

**Important Comments:** This antibody is expected to recognise isoform a (NP\_057318.2) and isoform b (NP\_976313.1 and NP\_976314.1).

### Immunogen

Peptide with sequence C-RTQIDSLYEHIQD, from the C Terminus of the protein sequence according to NP\_057318.2; NP\_976313.1; NP\_976314.1.

Please note the [peptide](#) is available for sale.

### Purification and Storage

Purified from goat serum by ammonium sulphate precipitation followed by antigen affinity chromatography using the immunizing peptide.

Supplied at 0.5 mg/ml in Tris saline, 0.02% sodium azide, pH7.3 with 0.5% bovine serum albumin.

Aliquot and store at -20°C. Minimize freezing and thawing.

### Applications Tested

**Peptide ELISA:** antibody detection limit dilution 1:16000.

**Western blot:** Approx 75kDa band observed in Human Spleen lysates (calculated MW of 76.0kDa according to NP\_976313.1 and NP\_976314.1). Recommended concentration: 1-3µg/ml.

**IHC:** Paraffin embedded Human Small Intestine. Recommended concentration: 5µg/ml.

### Species Reactivity

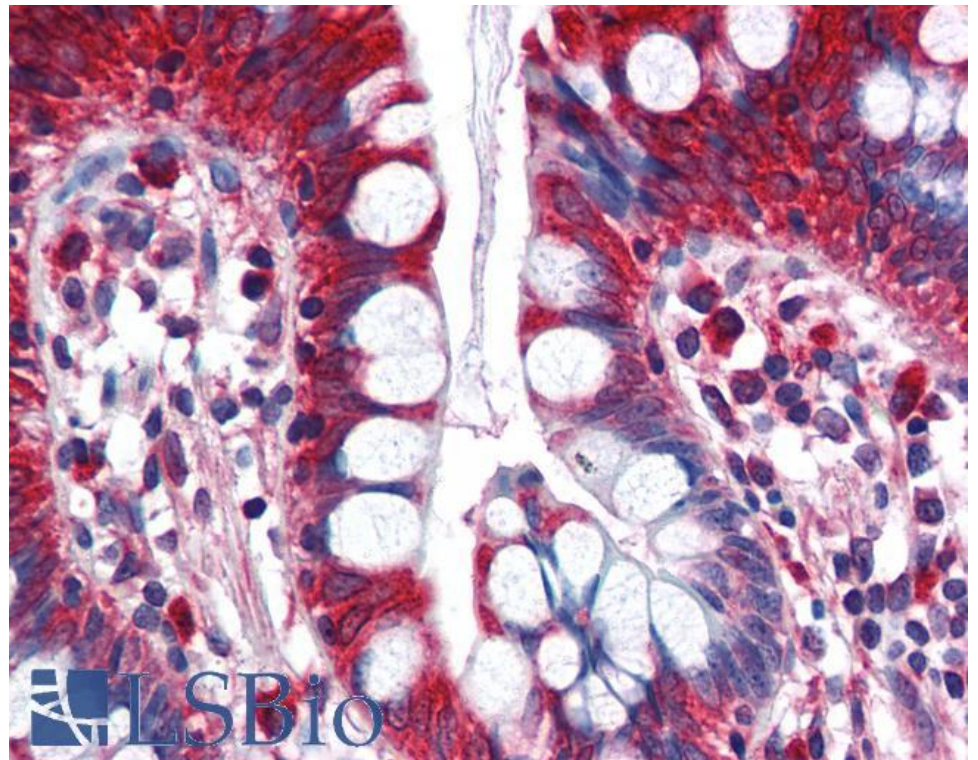
**Tested:** Human

**Expected from sequence similarity:** Human





EB07250 (1 $\mu$ g/ml) staining of Human Spleen lysate (35 $\mu$ g protein in RIPA buffer). Primary incubation was 1 hour. Detected by chemiluminescence.



EB07250 (5 $\mu$ g/ml) staining of paraffin embedded Human Small Intestine. Steamed antigen retrieval with citrate buffer pH 6, AP-staining.