

## UK Office

### Everest Biotech Ltd

Cherwell Innovation Centre  
77 Heyford Park  
Upper Heyford  
Oxfordshire  
OX25 5HD  
UK

Enquiries:

[info@everestbiotech.com](mailto:info@everestbiotech.com)

Sales:

[sales@everestbiotech.com](mailto:sales@everestbiotech.com)

Tech support:

[support@everestbiotech.com](mailto:support@everestbiotech.com)

Tel: +44 (0)1869 238326

[www.everestbiotech.com](http://www.everestbiotech.com)

**Research Use Only. Not for  
diagnostic or therapeutic use.**

## EB08619 - Goat Anti-ABCA9 Antibody

Size: 100µg specific antibody in 200µl



### Target Protein

**Principal Names:** ABCA9, ATP-binding cassette, sub-family A (ABC1), member 9, DKFZp686F2450, EST640918, MGC75415, ATP-binding cassette A9, ATP-binding cassette, sub-family A, member 9

**Official Symbol:** ABCA9

**Accession Number(s):** NP\_525022.2

**Human GeneID(s):** [10350](#)

### Immunogen

Peptide with sequence C-QRVVQELEMENIQD, from the internal region of the protein sequence according to NP\_525022.2.

Please note the [peptide](#) is available for sale.

### Purification and Storage

Purified from goat serum by ammonium sulphate precipitation followed by antigen affinity chromatography using the immunizing peptide.

Supplied at 0.5 mg/ml in Tris saline, 0.02% sodium azide, pH7.3 with 0.5% bovine serum albumin.

Aliquot and store at -20°C. Minimize freezing and thawing.

### Applications Tested

**Peptide ELISA:** antibody detection limit dilution 1:128000.

**Western blot:** Approx. 170kDa band observed in Human Brain (Cerebellum) lysates (calculated MW of 184kDa according to NP\_525022.2). Recommended concentration: 0.1-0.3µg/ml. Primary incubation was 1 hour.

**IHC:** Paraffin embedded Human Testis. Recommended concentration: 5µg/ml.

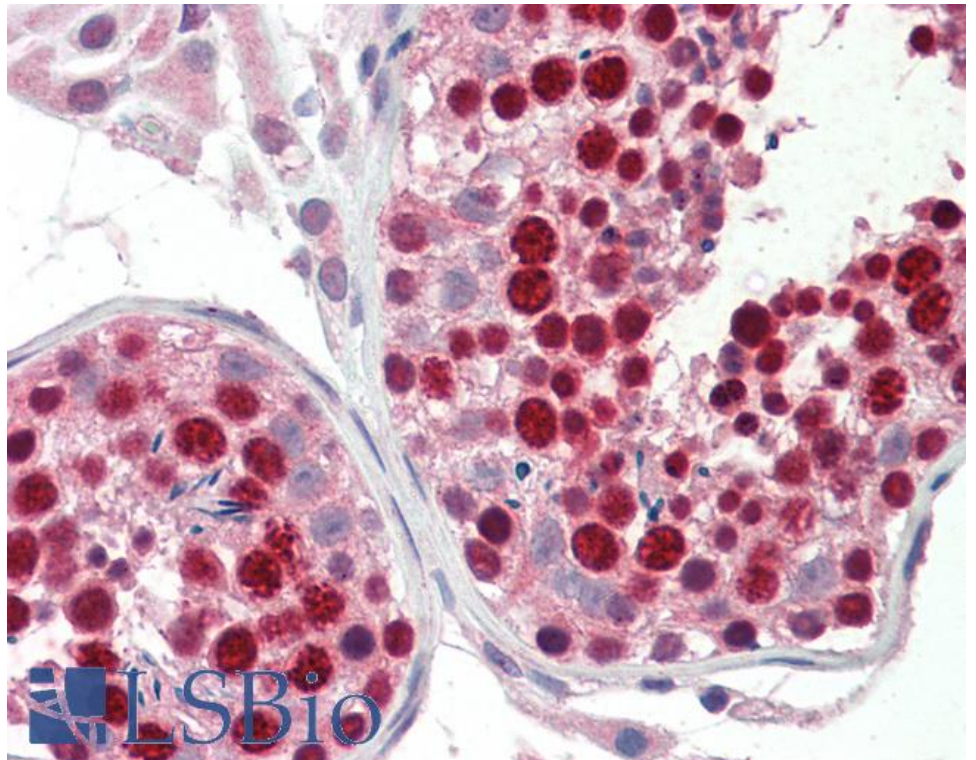
### Species Reactivity

**Tested:** Human

**Expected from sequence similarity:** Human



EB08619 (0.1µg/ml) staining of Cerebellum lysate (35µg protein in RIPA buffer). Detected by chemiluminescence.



EB08619 (5µg/ml) staining of paraffin embedded Human Testis. Steamed antigen retrieval with citrate buffer pH 6, AP-staining.