

UK Office

Everest Biotech Ltd

Cherwell Innovation Centre
77 Heyford Park
Upper Heyford
Oxfordshire
OX25 5HD
UK

Enquiries:

info@everestbiotech.com

Sales:

sales@everestbiotech.com

Tech support:

support@everestbiotech.com

Tel: +44 (0)1869 238326

www.everestbiotech.com

**Research Use Only. Not for
diagnostic or therapeutic use.**

EB08260 - Goat Anti-AADAT (int.) Antibody

Size: 100µg specific antibody in 200µl



Target Protein

Principal Names: AADAT, aminoadipate aminotransferase, KAT2, KATII, L kynurenine/alpha aminoadipate aminotransferase, L-kynurenine/alpha-aminoadipate aminotransferase, alpha-aminoadipate aminotransferase, kynurenine aminotransferase II

Official Symbol: AADAT

Accession Number(s): NP_057312.1; NP_872603.1

Human GeneID(s): [51166](#)

Important Comments: Both reported variants represent identical protein (NP_057312.1 and NP_872603.1).

Immunogen

Peptide with sequence C-DRVIDFYSNQKD, from the internal region of the protein sequence according to NP_057312.1; NP_872603.1.

Please note the [peptide](#) is available for sale.

Purification and Storage

Purified from goat serum by ammonium sulphate precipitation followed by antigen affinity chromatography using the immunizing peptide.

Supplied at 0.5 mg/ml in Tris saline, 0.02% sodium azide, pH7.3 with 0.5% bovine serum albumin.

Aliquot and store at -20°C. Minimize freezing and thawing.

Applications Tested

Peptide ELISA: antibody detection limit dilution 1:32000.

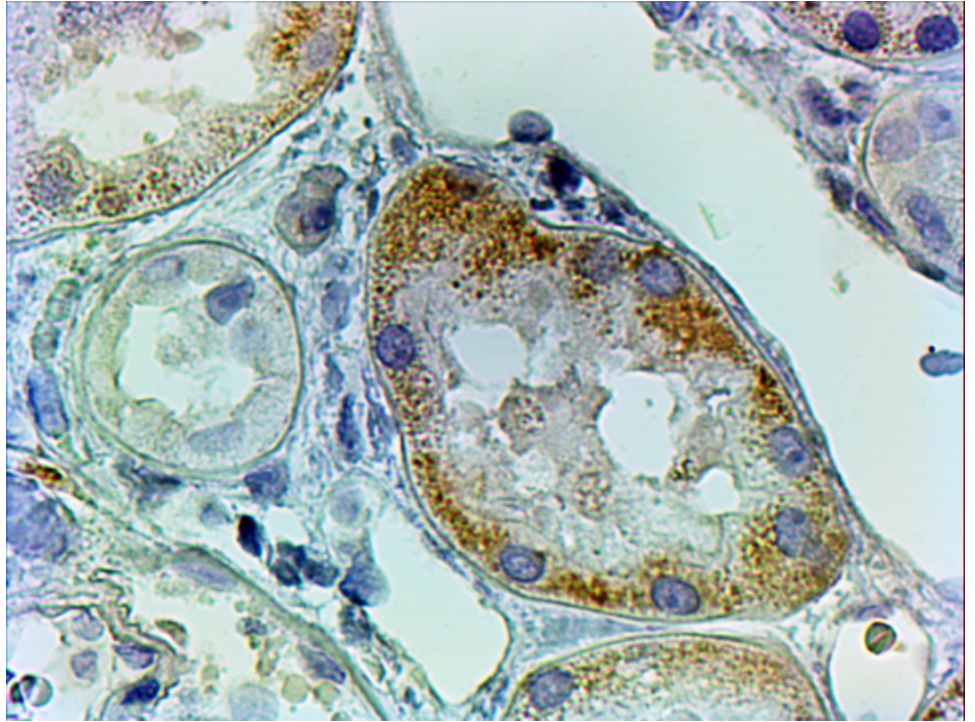
IHC: In paraffin embedded Human Kidney shows mitochondrial staining in PCT.

Recommended concentration, 2-4µg/ml.

Species Reactivity

Tested: Human

Expected from sequence similarity: Human



EB08260 (2 μ g/ml) staining of paraffin embedded Human Kidney. Steamed antigen retrieval with citrate buffer pH 6, HRP-staining.