

UK Office

Everest Biotech Ltd

Cherwell Innovation Centre
77 Heyford Park
Upper Heyford
Oxfordshire
OX25 5HD
UK

Enquiries:

info@everestbiotech.com

Sales:

sales@everestbiotech.com

Tech support:

support@everestbiotech.com

Tel: +44 (0)1869 238326

www.everestbiotech.com

**Research Use Only. Not for
diagnostic or therapeutic use.**

EB06230 - Goat Anti-4E-T / EIF4ENIF1 Antibody

Size: 100µg specific antibody in 200µl



Target Protein

Principal Names: EIF4ENIF1, 4E-T, Clast4, FLJ21601, 2610509L04Rik, eukaryotic translation initiation factor 4E nuclear import factor 1, eIF4E-transporter, FLJ26551, OTTHUMP00000063276

Official Symbol: EIF4ENIF1

Accession Number(s): NP_062817.2; NP_001157974.1

Human GeneID(s): [56478](#)

Non-Human GeneID(s): 74203 (mouse)

Important Comments: This antibody is expected to recognise isoform 1 (NP_062817.2) and isoform b (NP_001157974.1). Reported variants represent identical protein (NP_062817.2; NP_001157973.1).

Immunogen

Peptide with sequence C-AKVISVDELEYRQ, from the C Terminus of the protein sequence according to NP_062817.2; NP_001157974.1.

Please note the [peptide](#) is available for sale.

Purification and Storage

Purified from goat serum by ammonium sulphate precipitation followed by antigen affinity chromatography using the immunizing peptide.

Supplied at 0.5 mg/ml in Tris saline, 0.02% sodium azide, pH7.3 with 0.5% bovine serum albumin.

Aliquot and store at -20°C. Minimize freezing and thawing.

Applications Tested

Peptide ELISA: antibody detection limit dilution 1:32000.

Western blot: Approx 140-150kDa band observed in 293 lysates (predicted size of approx. 108kDa according to NP_062817.1, however our observation agrees with that of Dostie et al (see below)). Recommended for use at 0.25-0.5µg/ml

IHC: In paraffin embedded Human Pancreas shows strong staining of cytoplasm in acinar cells-. Recommended concentration, 5-10µg/ml.

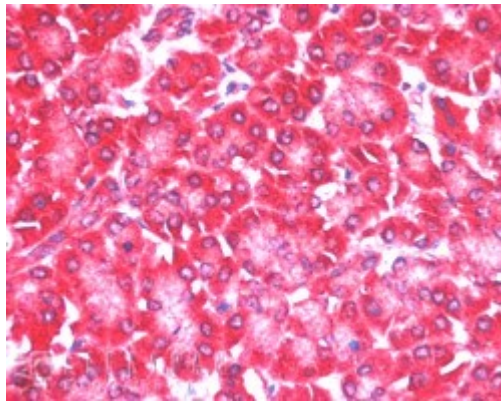
Species Reactivity

Tested: Human

Expected from sequence similarity: Human, Mouse, Rat, Dog, Pig, Cow



EB06230 staining (0.25µg/ml) of 293 lysate (RIPA buffer, 35µg total protein per lane). Primary incubated for 1 hour. Detected by western blot using chemiluminescence.



EB06230 (5µg/ml) staining of paraffin embedded Human Pancreas. Steamed antigen retrieval with citrate buffer pH 6, AP-staining.